



LARAC

CONFERENCE

CELEBRATION AWARDS

2023



Headline Partner



Brought to you by



FOOD WASTE SEMINAR

Dr Wendy Fail, Senior Waste Management Officer,
Northumberland County Council
Chris Huhne, Chair, ADBA



LARAC

CONFERENCE

CELEBRATION AWARDS

2023



Headline Partner



Brought to you by



FOOD WASTE SEMINAR

Dr Wendy Fail, Senior Waste Management Officer,
Northumberland County Council



Northumberland County Council

Northumberland County Council's Food Waste Collection Trial



Dr Wendy Fail
Senior Waste Management
Officer

www.northumberland.gov.uk

Introduction

NCC Waste Collections – An Overview

Trial Location

Commercial Collections

Communications

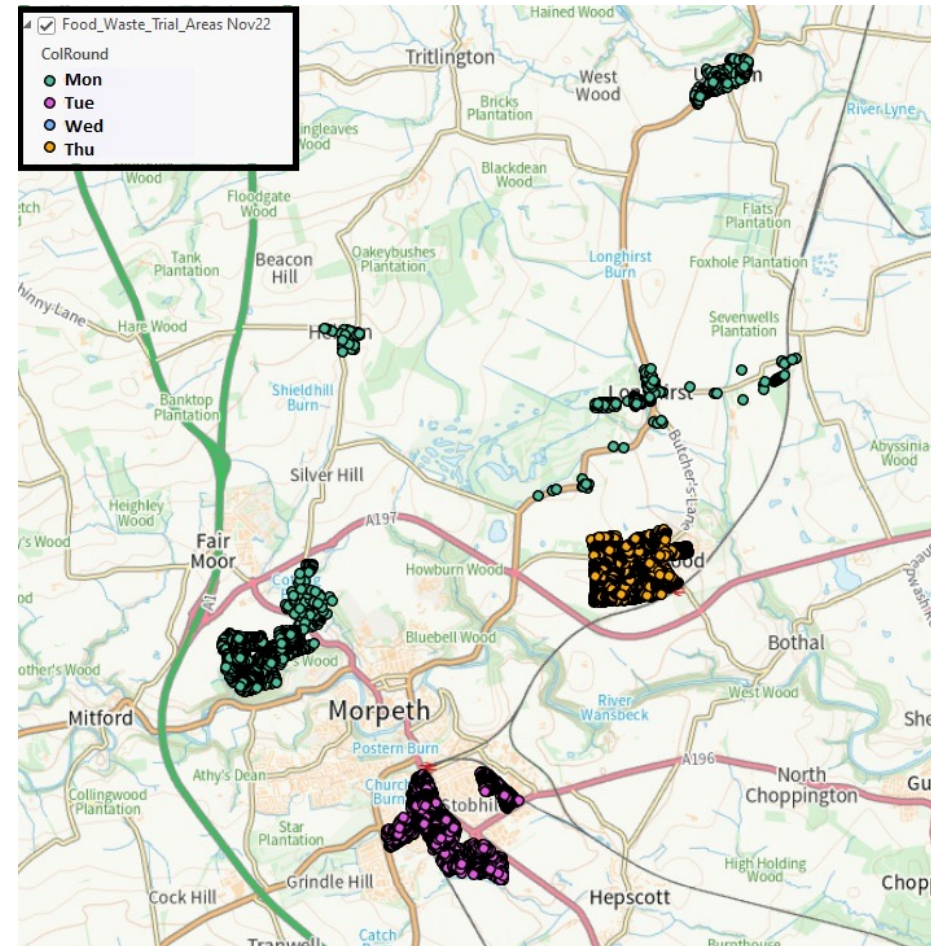
The Data – so far




Waste Management in Northumberland



Food Waste Collections – Trial Locations



[illegible]



Northumberland

County Council

Search

Menu


Alerts

<

General Alert: Missed Refuse collections

>

View all



As part of its drive to combat climate change and improve recycling rates in Northumberland, the county council is undertaking a pilot scheme, collecting the weekly food waste from around 4,200 households across four areas within the county.

An average household's waste is made up of one-third food-waste that could be recycled. Additionally, wasting food costs the average family around £60 a month.

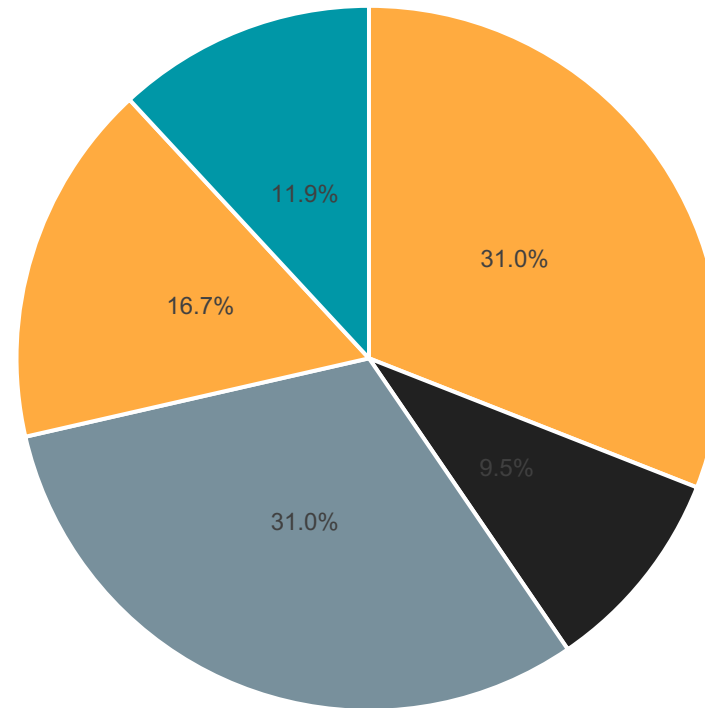
This pilot scheme will help the council assess the impact recycling food waste will have on overall household waste, determine the viability of extending the service across the rest of the county, and help us collect your feedback and refine the service.

All the information and support you need for taking part in this trial can be found on this web page.

Page contents:

- When will your bin be collected?
- What can go in your food waste bin
- Get a free text/email reminder before each bin collection day
- Your questions answered

Opt-Outs



- Home Compost
- Glass bin removal requested
- Not enough waste/pensioner/lives alone
- Doesn't want another bin
- Other issue



As a household of only two adults, who pride themselves in creating the minimum food waste whenever possible, we were really surprised by how much food waste actually created! It's a great idea and should be expanded.

Originally, I was really shocked at the amount of food waste we had and the bin was 100% full. Although there's only 2 of us we do have family visit for meals etc and we have now reduced our food waste significantly because of the food recycling which has created an awareness of our waste and therefore educated us.



I love that I can make a difference to the environment using food waste. Generally there's not much, but it makes you think more about using left overs first. Can I also say how lovely the bin collectors are, always say hello if your about and very cheerful . It's been a pleasure to be part of this scheme, hope it becomes more than just a pilot.

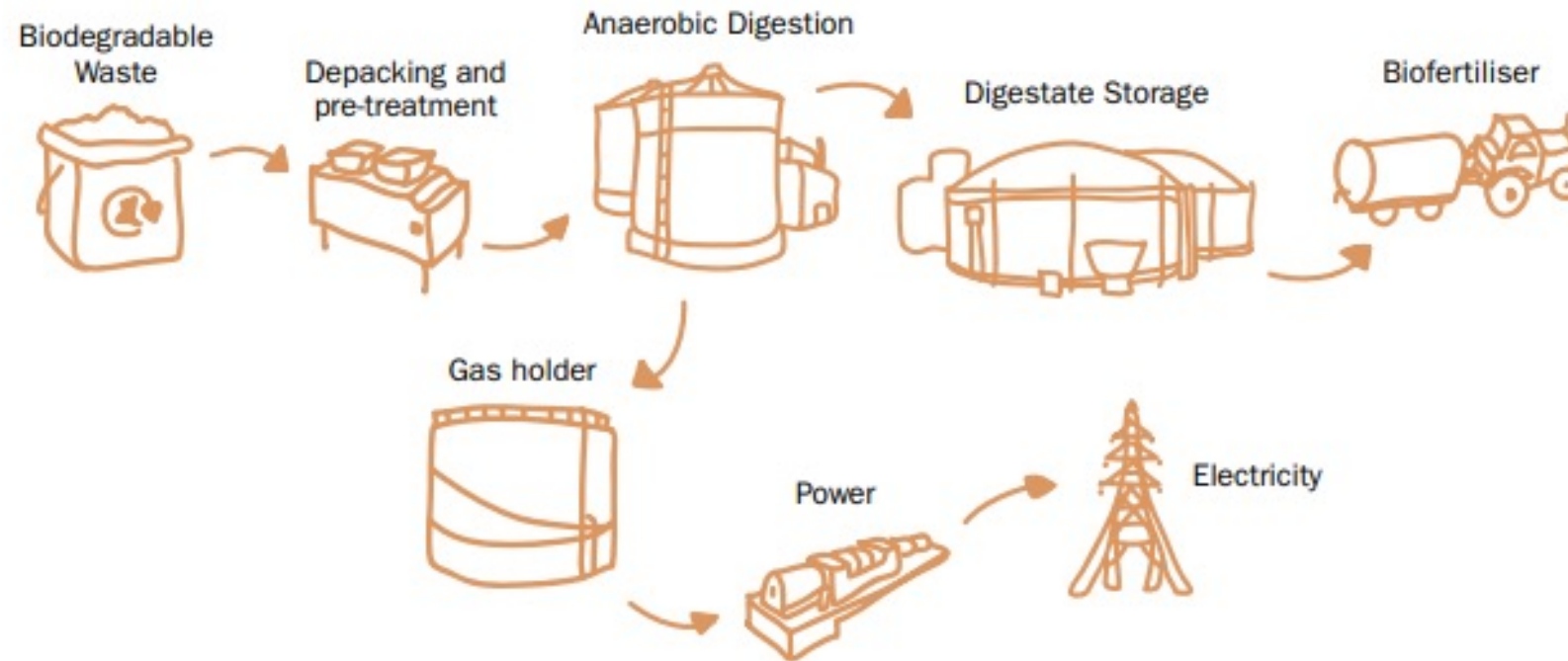
As a family we love it, it is great, very handy to have the caddy in the kitchen, it is now part of our everyday life. On the plus side, our general waste bin doesn't smell anymore which is a bonus too. Love it and hope it continues.

Non-Domestic Collections

<u>Date</u>	<u>Location</u>	<u>Day</u>	<u>Round</u>	<u>Bins OK</u>	<u>Bins not OK</u>	<u>Comments</u>
4-4-23	County Hall Kitchens	Tue	CplFod_21L			All Bins empty. Recorded on regular street sheets
18-4-23	County Hall Kitchens	Tue	CplFod_21L	1	0	1 bag collected
25-4-23	County Hall Kitchens	Tue	CplFod_21L	1	0	1 Bin was full
3-5-23	County Hall Kitchens	Wed	CplFod_21L	1	0	1 Bin was full
10-5-23	County Hall Kitchens	Wed	CplFod_21L	1	0	1 Bin Full



Kerbside Food Waste Collection



The Data – so far...

Round Details			Participation												
Day	Area	Round Code	Houses on Round	Smallest Present (No of Homes)	Largest Present (No of Homes)	Avg Present (No of Homes)	Lowest Set out Rate %	Highest Set out Rate %	Avg Set Out Rate %	Lightest kg per container	Heaviest KG per container	Avg KG per container	Lightest For All Props	Heaviest for All Props	Avg of all Props
Mon	Morpeth/Longhirst/Hebron/Ulgham	CplFod_11L	876	358	558	462.8	33.2	63.7	52.5	2.13	4.17	2.91	1.21	2.44	1.53
Tue	Morpeth Stobhill	CplFod_21L	1,056	424	908	489.6	40.2	86.0	46.4	1.52	4.11	2.84	1.00	1.91	1.30
Wed	Bedlington	CplFod_31L	1,326	439	759	526.9	33.1	57.2	39.7	1.77	4.08	2.57	0.77	1.69	1.02
Thu	Pegswood	CplFod_41L	1,280	442	698	554.6	34.5	54.5	43.3	2.12	4.31	2.61	0.84	1.91	1.13
All Days	Total Averages		1,135	415.75	730.75	508.5	35.2	65.4	45.5	1.88	4.17	2.73	0.96	1.99	1.24
Totals			4,538									Average	0.93	1.95	1.21

Round Details			Replacement Bag Monitoring						
Day	Area	Round Code	Houses on Round	Min Bag Reqs. Single Week	Max Bag Reqs. Single Week	Average Bag Reqs. per Week	Total Bag Reqs. For Round all Time	Bag Reqs. per house per Week	Individual Bags used per house per week
Mon	Morpeth/Longhirst/Hebron/Ulgham	CplFod_11L	876	8	42	22.7	828	0.0259	1.35
Tue	Morpeth Stobhill	CplFod_21L	1,056	11	33	22.7	841	0.0215	1.12
Wed	Bedlington	CplFod_31L	1,326	12	38	25.8	925	0.0189	0.98
Thu	Pegswood	CplFod_41L	1,280	18	40	27.3	1011	0.0213	1.11
All Days	Total Averages		1,135	8	42	24.4	3616	0.0215	1.12

Round Details			Workload									
Day	Area	Round Code	Houses on Round	Lightest Ever (Weight)	Heaviest Ever (Weight)	Avg Weight	Earliest Ever (Time)	Latest Ever (Time)	Avg Time	Shortest Distance	Longest Distance	Avg Distance
Mon	Morpeth/Longhirst/Hebron/Ulgham	CplFod_11L	876	1050	2140.0	1340.0	12.35 pm	2.06 pm	1.19 pm	41.0	85.0	65.9
Tue	Morpeth Stobhill	CplFod_21L	1056	1050	2020.0	1369.3	12.29 pm	2.06 pm	12.53 pm	25.0	57.0	41.5
Wed	Bedlington	CplFod_31L	1326	1020	2240.0	1352.4	12.27 pm	1.49 pm	1.01 pm	25.0	89.0	43.7
Thu	Pegswood	CplFod_41L	1280	1080	2440.0	1445.1	11.45 am	2.25 pm	1.01 pm	26.0	73.0	43.9
All Days	Total Averages		1134.5	1055	2210.0	1376.7	12.19 pm	2.06 pm	1.03 pm	29.3	71.8	48.6
Totals			4538	4,220.00	8840.0	5506.9						

Residual Waste Impacts

Round	SUM of Weight	SUM of Distance [miles]	Weight (t)
	0	0	
CplFod_11L	60300	2900	60.30
CplFod_21L	61620	1866	61.62
CplFod_31L	60860	1967	60.86
CplFod_41L	65030	1977	65.03
Grand Total	247810	8710	247.81

In total, 247.81t of food waste has been diverted from residual waste since the start of the trial

Group Activity – Break into groups to discuss the following, then feedback

What are the barriers/ challenges faced by LAs in rolling out food waste collections - perspectives from those who have rolled out (actual experience) vs those who are yet to roll out (perceived experience)

How can LAs encourage and increase resident participation rates in food waste collections

PLUS 2 QUESTIONS FROM CHRIS

Any Questions?

Dr Wendy Fail
Senior Waste Management Officer
wendy.fail@northumberland.gov.uk



LARAC

CONFERENCE

CELEBRATION AWARDS

2023



Headline Partner



Brought to you by



FOOD WASTE SEMINAR

Chris Huhne, Chair, ADBA

ADBA: FROM FOOD WASTE TO CLEAN ENERGY

CHRIS HUHNE



INTRODUCING AD TECHNOLOGY

- **Anaerobic Digestion (AD) is the ready-to-use technology which converts methane-emitting organic wastes, including food wastes that cannot be eaten, into green, clean energy and valuable biofertiliser.**
- **In doing so, the sector contributes to the creation of a truly circular economy. Yet AD is currently estimated to be achieving just one fifth of its full potential.**
- **LAs invented modern AD: shout-out for Exeter and street-lighting.**
- **If all domestic food waste and other feedstocks (sewage sludge, farm manures and slurries etc) in the UK were processed by AD, we could meet nearly a tenth of our total gas demand and a fifth of imported gas.**
- **Shell and BP recent big investors. Sharp growth in sector.**



DEFRA RESOURCES AND WASTE STRATEGY

- To work towards eliminating food waste to landfill by 2030 (one of five strategic ambitions).
- Legislation for mandatory separate food waste collections delayed from 2023 to 2025 – ADBA are currently campaigning for reversal of the delay.
- AD infrastructure is ready and willing to work with LAs to treat food waste and provide valuable renewable energy back to local communities as soon as collections are in place.
- Can LAs rely on more delay? PM Sunak is an ally but the foot-dragging went down badly. Previous scares led by Daily Mail. But they are scares...



THE ECONOMICS OF AD FOR LOCAL AUTHORITIES

- The current methods of treating food waste, namely incineration and landfill, are both more expensive and more environmentally damaging than AD (WRAP gate fee survey 2018).
 - Landfill: £88 to £168 per tonne (non-hazardous waste including landfill tax, 80 gate fees reported)
 - EFW = £33 to 117 per tonne (pre and post 2000 facilities, 62 gate fees reported)
 - AD = -£5 to £68 per tonne (62 gate fees reported)
- Setup costs will likely differ across local authorities depending on a number of factors.
- England is behind the rest of the UK when it comes to capitalizing on the economic benefits of using AD to treat food waste.

AD VS INCINERATION

- Dealing with waste through incineration in 'energy-from-waste' plants is increasingly presented as a sustainable option – this is problematic from both an environmental and a social point of view.
 - Recycling waste or treating waste with AD is more profitable and creates more jobs than incineration.
 - Incineration works to encourage wastefulness and discourage recycling by forcing local authorities into long-term 'deliver or pay' contracts with expensive incineration plants, based on the consistent production of a steady stream of waste.
 - The County Council in Nottinghamshire has previously refused separate food waste collection in order to avoid the fines for not meeting waste delivery targets for incineration.
- AD is the more future-proof and profitable option to empower local authorities and their citizens in the transition to Net Zero and will become more so once the Emissions Trading Scheme covers waste.
- The UK carbon price WILL align with EU price, and will add at least £20 per tonne to EFW options

CASE STUDY: SCOTLAND

- Scotland's Food Waste Reduction Action Plan was published in April 2019.
- 80% of households already have access to food waste collections.
- One AD Plant in Scotland, named the Deerdykes Recycling Centre, already powers 2,400 homes per year.
- “Increasingly, waste has value. The AD process recognizes that, and turns things we don't want, like food waste and farmyard slurry, into something we desperately need – clean, affordable electricity,” – Stephanie Clark, policy manager at Scottish Renewables



Save-The-Date: 1pm to 2:30pm on Wednesday, 10th July – come to the Local Authorities Lunch at the Biogas Expo, NEC Birmingham!

Happy to arrange site visits to local plants, so you can see the technology at work: please contact alice.stephens@adbioresources.org

THANK YOU
FOR LISTENING.
ANY
QUESTIONS?





LARAC

CONFERENCE

CELEBRATION AWARDS

2023



Headline Partner



Brought to you by



QUESTIONS & ANSWERS



LARAC

CONFERENCE

CELEBRATION AWARDS

2023



Headline Partner



Brought to you by



THANK YOU FOR JOINING US!



LARAC

CONFERENCE

CELEBRATION AWARDS

2023



Headline Partner



Brought to you by



COMMERCIAL WASTE

Chair: Chris Mills, Special Adviser for Collections and Recycling, WRAP

Keith Patterson, Specialist - Waste & Recycling, WRAP

Phil Eccles, Waste and Recycling Advisor, Liverpool BID

Daniel Long, Business Development Team Leader, Hillingdon Council



LARAC

CONFERENCE

CELEBRATION AWARDS

2023



Headline Partner



Brought to you by



COMMERCIAL WASTE

Keith Patterson, Specialist - Waste & Recycling, WRAP

Commercial Waste and Recycling

12 October 2023

Chair: Chris Mills, WRAP
Keith Patterson, WRAP
Phil Eccles, Liverpool BID Company
Daniel Long, Hillingdon BC



Workplace recycling

1. The opportunities and challenges
2. Engaging with businesses
3. Delivering services



Questions to think about

- Chris - How might the service provider prepare for change
- Keith - Business support tools, guidance, resources
- Daniel - Data and information needs for service providers
- Phil - Communicating and engaging effectively with businesses



Non-household recycling in England

- Potential to increase recycling of non-household waste.
- Simpler Recycling / Consistency Consultation outlined proposals to increase non-household recycling
- The Environment Act 2021 sets conditions that glass, metal, plastic, paper and card & food waste are presented separate from residual waste.
- Statutory Guidance to set out:
 - *key dates, including potential for phased implementation;*
 - *any potential exemptions on mixing of materials; and*
 - *the process for compliance and enforcement.*



Consultation on Consistency in Household and Business Recycling in England

May 2021

Wales: New Regulations 6th April 2024*

- All workplaces such as businesses, public sector and charities will need to **separate their recyclable materials** in the same way most households already do.
- **Bans on the disposal of all food waste to sewer** from non-domestic premises.
- **Bans** on specified **separate recyclable** waste streams going to **incineration plants and landfills**.

Applies to all waste and recycling collectors and processors who manage **household-like waste** from workplaces.

**Hospitals (NHS and private) have an additional two years to comply with the separation requirements. The ban on food waste to sewer applies from 6th April 2024.*



Non-household recycling in Northern Ireland

- Recycling of non-household waste in Northern Ireland is estimated to be ~40%
- Recycle 65% of municipal waste by 2035
- Recycle 70% of waste by 2030
- Food Waste (Northern Ireland) Regulations 2015



Opportunities and challenges

- 2.4 million businesses in England, NI, and Wales
- Duty of Care
- Potential to increase recycling of non-household waste
- UK commitment to recycle 65% of municipal waste by 2035
- Separate collection of dry recyclables
- Separate collection of food waste for recycling
- Shared objective, similar policies across the nations





Municipal waste

–waste that is similar
in nature and composition
to household waste

**Household
waste
recycling**



**Business
waste
recycling**

65%

Small and micro business barriers to recycling



Waste and recycling is low on business agenda



Lack of clarity of responsibilities



Little knowledge of optimisation of provision
– adding a recycling container can reduce overall cost

Various studies

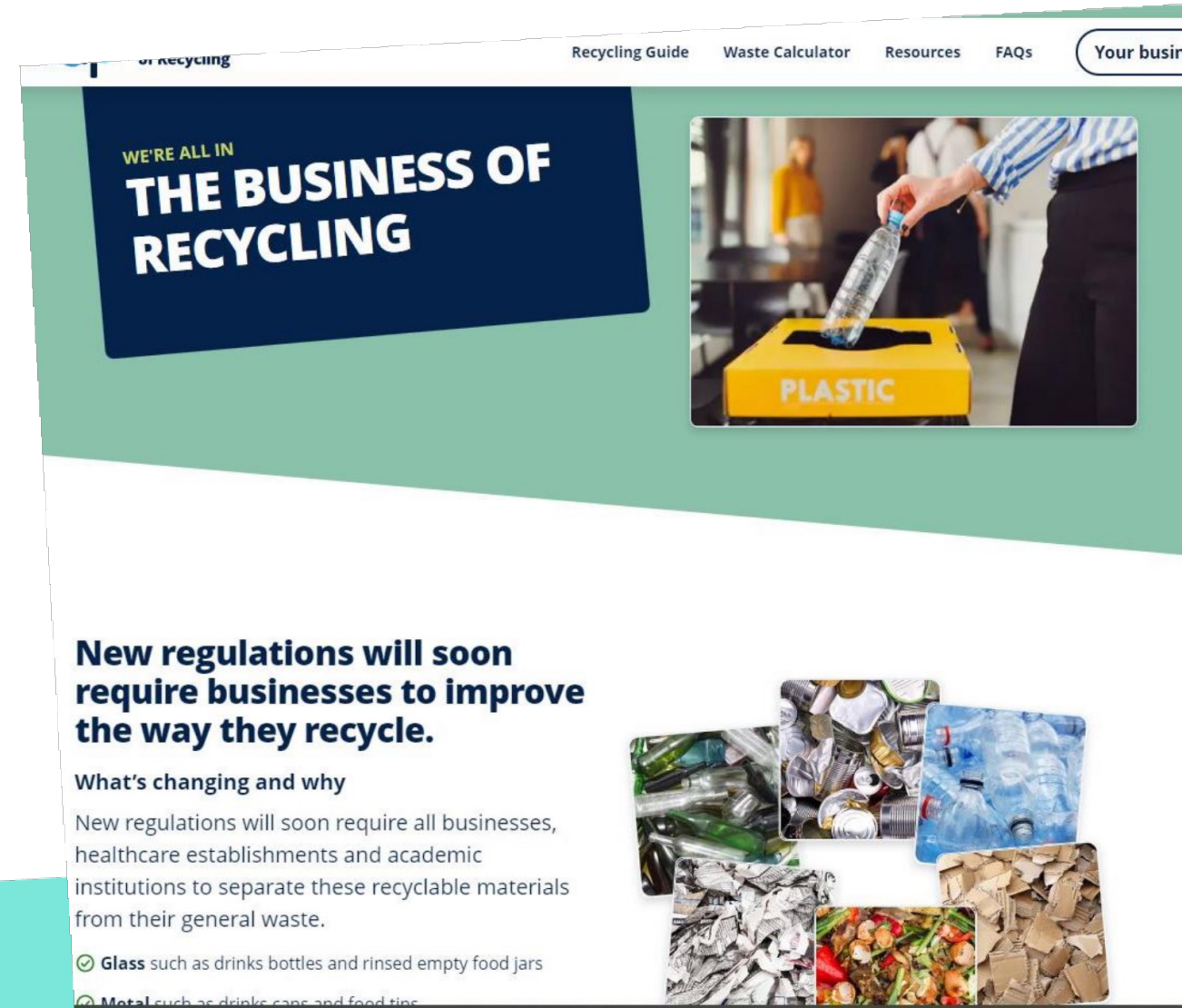
Small and micro business barriers to recycling

-  Not enough space for required waste provision
-  High turnover of staff
-  Shared provision can be open to abuse
-  Assumption that they do not produce enough waste to warrant a recycling provision

Various studies

Addressing barriers to recycling

- Increase awareness of what will be required by businesses
- Support to understand the savings or costs of recycling
- Procurement guidance
- Resources to engage employees
- National communications and engagement
- Test effectiveness of online and in-person support



Preferred support

- Limited existing guidance available
- WRAP survey of businesses and business representatives
- 85%+ in-person advisory support
- Dedicated business recycling website
- Sector specific guidance
- Good practices, case studies, and template resources



Building a support programme

Partnered with business and waste service providers to develop...

- Online guidance
- Business Waste Calculator
- Resources for businesses, e.g., communications



Worked with pilot partners to test effectiveness of additional in-person support

A screenshot of the 'Business Waste Calculator' website. The header includes the 'wrap' logo, the title 'Business Waste Calculator', and navigation tabs for 'Waste', 'Containers', 'Cost', and 'Space'. A 'Your Business' button is in the top right. The main heading is 'What's in the general waste at your site?' with a subtext: 'General waste includes any materials which are collected in containers that go to landfill, and are **not recycled**.' Below this are two questions with radio button options: 'Do you know how much general waste is collected from your site?' (Yes/No) and 'Has a Bin Audit been carried out for your site?' (Yes/No). A link 'Unsure? Bin Audits explained' is provided. The next section is 'Composition of waste' with a subtext: 'You can continue with the typical composition for your business type, or add custom figures to better represent the breakdown of materials in your general waste.' It includes a dropdown for 'Figures for typical waste composition' and a question 'Which figures would you like to use for the calculations?' (Typical/Custom). At the bottom are 'Back to start' and 'Continue' buttons.

Discussion Groups

- Chris - How might the service provider prepare for change
- Keith - Business support tools, guidance, resources
- Daniel - Data and information needs for service providers
- Phil - Communicating and engaging effectively with businesses



Thank you

wrap.org.uk

 @WRAP_UK



LARAC

CONFERENCE

CELEBRATION AWARDS

2023



Headline Partner



Brought to you by



COMMERCIAL WASTE

Phil Eccles, Waste and Recycling Advisor, Liverpool BID
Daniel Long, Business Development Team Leader, Hillingdon Council

B.O.R.

The Pilot Experience
Phil Eccles - Liverpool BID Co



Liverpool BID Co

BOR Support

- Engagement process
- Different Approaches
 - Emailing our Membership
 - Direct Contact -ME plus
- Identifying the right person
- Time required



Engagement

- Comms team use of direct email to our database
- Contact from interested members
- Initial call to explain and arrange appt
- Email to confirm
- No more than 20 mins

First Appt

- Individual businesses concerns
- Explaining where we are now
- Emphasising Support available
- Website and leaflet use



We haven't got the space to do this!

Duplication of some services meant that not all containers were needed.



Access to
shared
provision
opportunities
could be a
challenge



The 2nd Appt

- Did they read the leaflet
- Did they visit the website
- What if's and flexibility -Discussing the deadline
- Enforcement ?
- Contractor's "Advice"
- Waste Audits

Follow up

- Questions and requests from members
- Rising interest - Chester and St Helens

Hillingdon Council

Commercial Waste Presentation

By Daniel Long

Introduction

- 22% Market Share.
- 1531 businesses served.
- Trialling food waste for commercial.
- A revenue stream of £1.8 million per annum.
- Continuous steady growth.
- Data captured for strategic decision making.
- Cooperative relationships with other Hillingdon Councils departments.

General Waste

- Offers 1280L, 1100L, 360L and kerbside sack collections
- Most popular service is currently the 1100L eurobin.
- Currently more uptake on the 360L in recent months.



DMR (Dry Mixed Recycling)

- Currently offering a 1100L eurobin and kerbside sack collections.
- Often taken up alongside General Waste.
- Customers converting general waste for recycling bins where possible.
- Currently looking at ways to monitor/manage contamination among commercial recycling.



Trialling food waste

- Currently trialling food waste.
- 2 customers signed up from commercial as of August 2023
- 240L wheelie bins.
- Scope to make commercial food waste an approved service.
- A high interest from the catering and hospitality industry.



COMMS and Engagement of the Food Waste Trial.

- Regular 1:1 engagement with the customers.
- Updates from the collection crews.
- Review the results.
- Advise customer of issues.
- Request customers input.
- Address Issues.
- Monitor accordingly.

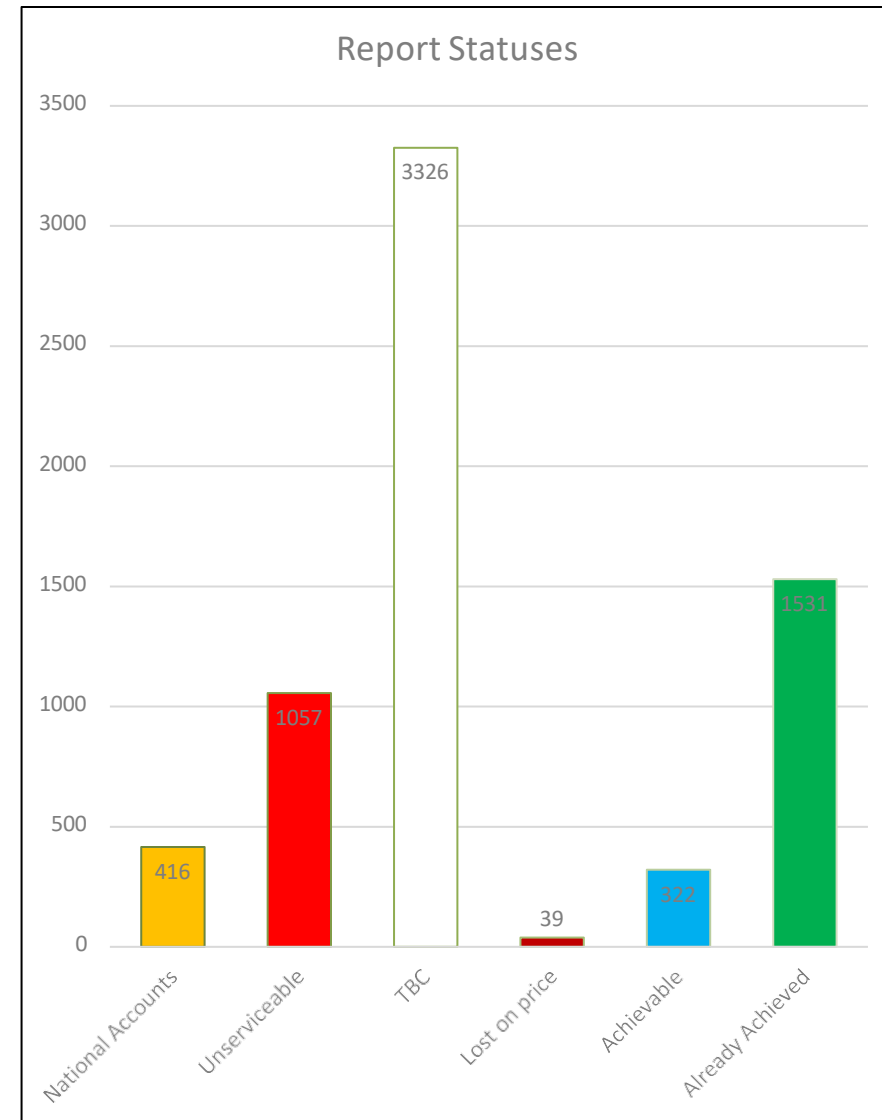


Importance of data in commercial waste.

- Data helps to measure performance of the functions and projects on their successes.
- Good relevant data will back up your proposals and arguments.
- Data helps to develop better business strategies.
- Data helps promote positive change.
- Data can help you identify patterns and develop actions.
- Data can be used to review decisions and their impact on the function.

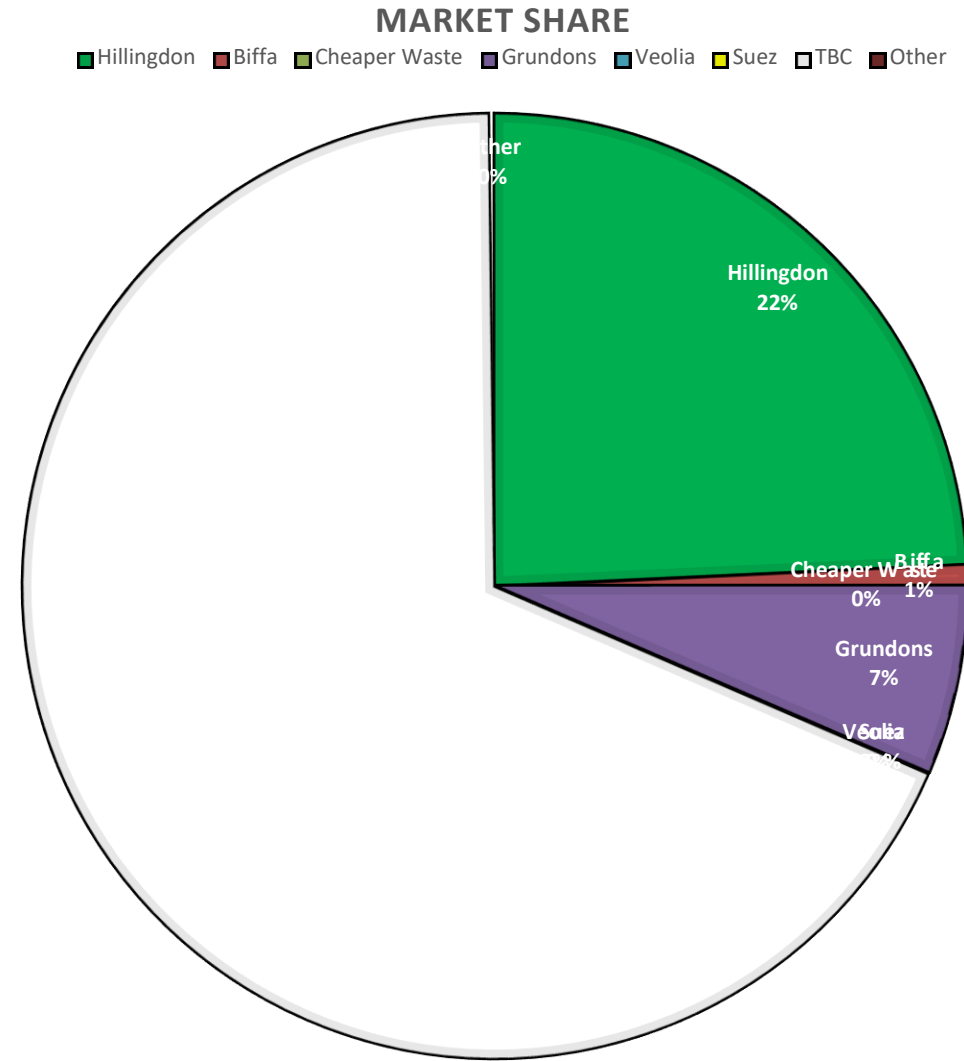
Sales Waste Database

- A live document for use by the sales team created on Microsoft Excel
- Data based on business rates and compared to businesses achieved
- Formulas/subsheets used to capture and create reports/graphs for strategies, updates and decision making.
- Allows for sales team to report findings on each potential customer and mark for future reference and/or other team members.
- Allows for market positions to be reflected once populated



Market Share

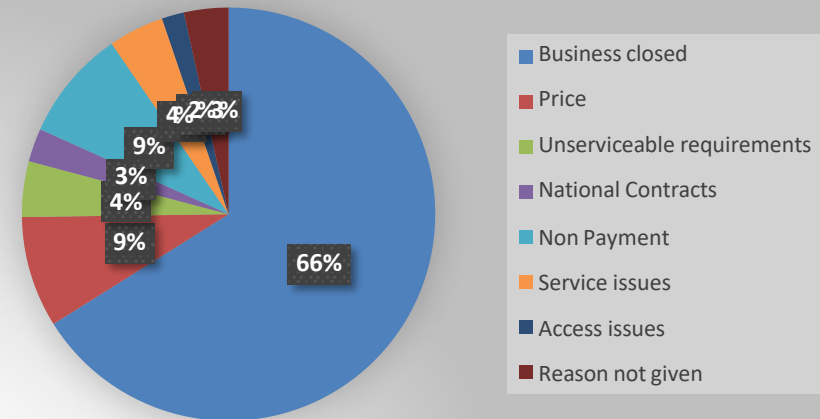
- A total of 6694 potential businesses in the borough
- A total of 1531 businesses being serviced.
- 131 businesses gained in 2022/2023.
- Currently trying to identify competitors shares and positions within the borough



Growth

- Growth has been slower due to more businesses closing.
- A more challenging economic climate creating a less stable market.
- Growth still being achieved albeit steadily.
- Businesses closing made up 66% of cancellations with 76 customers closing in 2022/2023.

Cancellations 22/23



Separate Waste Streams Effect and their effect on LAs

- LAs will need to offer separate recycling waste stream collections as “approved” services to customers.
- LAs will need to make changes to the service on an operational level to be able to service and collect the separated materials.
- LAs will need to advise all their existing customers of the changes and what these changes mean for their business.
- LAs will need to consider the needs of the customers they are working with on a individual level to identify the streams needed for them to comply.
- LAs will need to enforce these changes throughout the respective boroughs.

Thanks for listening!

Presentation by Daniel Long on behalf of Hillingdon Council



LARAC

CONFERENCE

CELEBRATION AWARDS

2023



Headline Partner



Brought to you by



QUESTIONS & ANSWERS



LARAC

CONFERENCE

CELEBRATION AWARDS

2023



Headline Partner



Brought to you by



TEA, COFFEE & NETWORKING



LARAC

CONFERENCE

CELEBRATION AWARDS

2023



Headline Partner



Brought to you by



WEEE

*Chair: James Ward, Waste Contracts and Strategy Officer,
Hull City Council*

*Niamh McBride, Local Authority Partnerships
Manager, Material Focus*

*Kieran O'Leary, Waste Strategy & Policy Officer,
Durham County Council*



LARAC

CONFERENCE

CELEBRATION AWARDS

2023



Headline Partner



Brought to you by



WEEE

*Niamh McBride, Local Authority Partnerships Manager,
Material Focus*



LARAC

CONFERENCE

CELEBRATION AWARDS

2023



Headline Partner



Brought to you by



WEEE

*Kieran O'Leary, Waste Strategy & Policy Officer, Durham
County Council*

Durham County Council's Small WEEE Campaign

Kieran O'Leary

Waste Strategy & Policy Officer

(One of two Project Officers for the Small WEEE
Campaign)



Background: Durham County Council Waste Management Service

Resources & Contracts

- 8th largest LA by size in England
- Largest LA in the North East
- 12 Household Waste Recycling Centres and 1 mobile HWRC
- 4 Waste Transfer Stations
- 1 composting facility
- Energy from Waste (EFW) contract with Suez
- Material Recycling Facility (MRF) with BIFFA



Productivity

- 37.1 % reuse, recycling and composting (2022/23)
- No food waste collections
- Over 65,000 garden waste subscriptions per season
- Operate a trade waste collection service to over 3,100 customers
- No kerbside collections of WEEE!



Background: The WEEE Landscape

- E-Waste is the fastest growing waste type, increasing by around 5% annually.
- In 2023, 82.6% of the world's e-waste will be either placed in landfill, burned, illegally traded or hoarded in the households.
- Even in Europe, which leads the world in e-waste recycling, only 54% of e-waste is officially reported as collected and recycled
- The amount of electricals placed on the market in 2020 and 2021 increased by 10.2% and 14.7% respectively, when compared to 2019, yet WEEE collections fell.
- One tonne of discarded mobile phones can provide 10 times more gold (400g) than one tonne of ore (4g)
- Each person in the UK buys three new electrical items each year
- 75% of us have at least one old or unused electrical items in our house, 45% have up to five.

Background: Small WEEE Campaign

- Successful in receiving 3 rounds of funding via the DTS fund & Material Focus Fund (Local Authority)
- £65,018 – DTS - Dedicated officer & initial scheme set up (19/20)
- £88,302 – DTS - Develop collection scheme / reuse and repair cafes (21/22)
- £100,000 – Material Focus - Develop Vape recycling system, increase comms and expand reuse, repair and recycling (Ongoing 23/24)
- Significant Teething problems, planned launch in February 2020 delayed due to COVID, in the meantime EA declares household WEEE as Hazardous waste changing dynamics of the project, first collection points rolled out in October 2020 before winter COVID restrictions saw the majority of collection points close. Eventual Launch in June 2021.



Legislation

June 9, 2020
by James Langley

WEEE

Legislation

Treat most household WEEE as hazardous, EA says

Most household waste electrical and electronic equipment (WEEE) must now be classified as waste containing persistent organic pollutants (POPs), according to updated guidance from the Environment Agency.



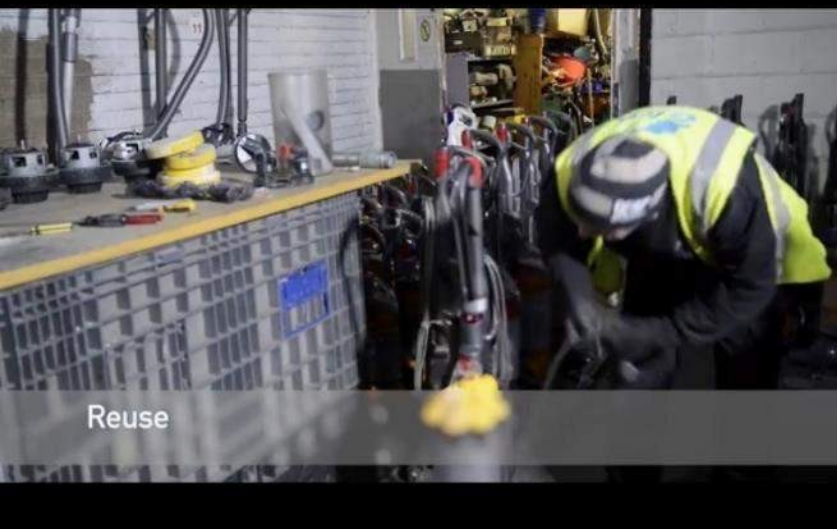
Recent eco-design measures restrict the use of BFRs in halogenated flame retardants in some televisions

This means most household WEEE must now be treated as hazardous unless it can be proved otherwise.

Hazardous Waste

- When hazardous waste is moved it must be accompanied by correctly completed paperwork called a consignment note. The note must be prepared before it's moved.
- DCC consigns every single collection made from a small WEEE collection point.
- A note is needed for all movements of hazardous waste, including:
 - collections from businesses by registered waste carriers;
 - movements from one premises to another within the same business;
 - movements from customer premises, where another business has produced waste;
- A consignment note is not needed to move hazardous waste for:
 - the movement of domestic hazardous waste (other than asbestos waste) from a domestic household to an initial collection point.





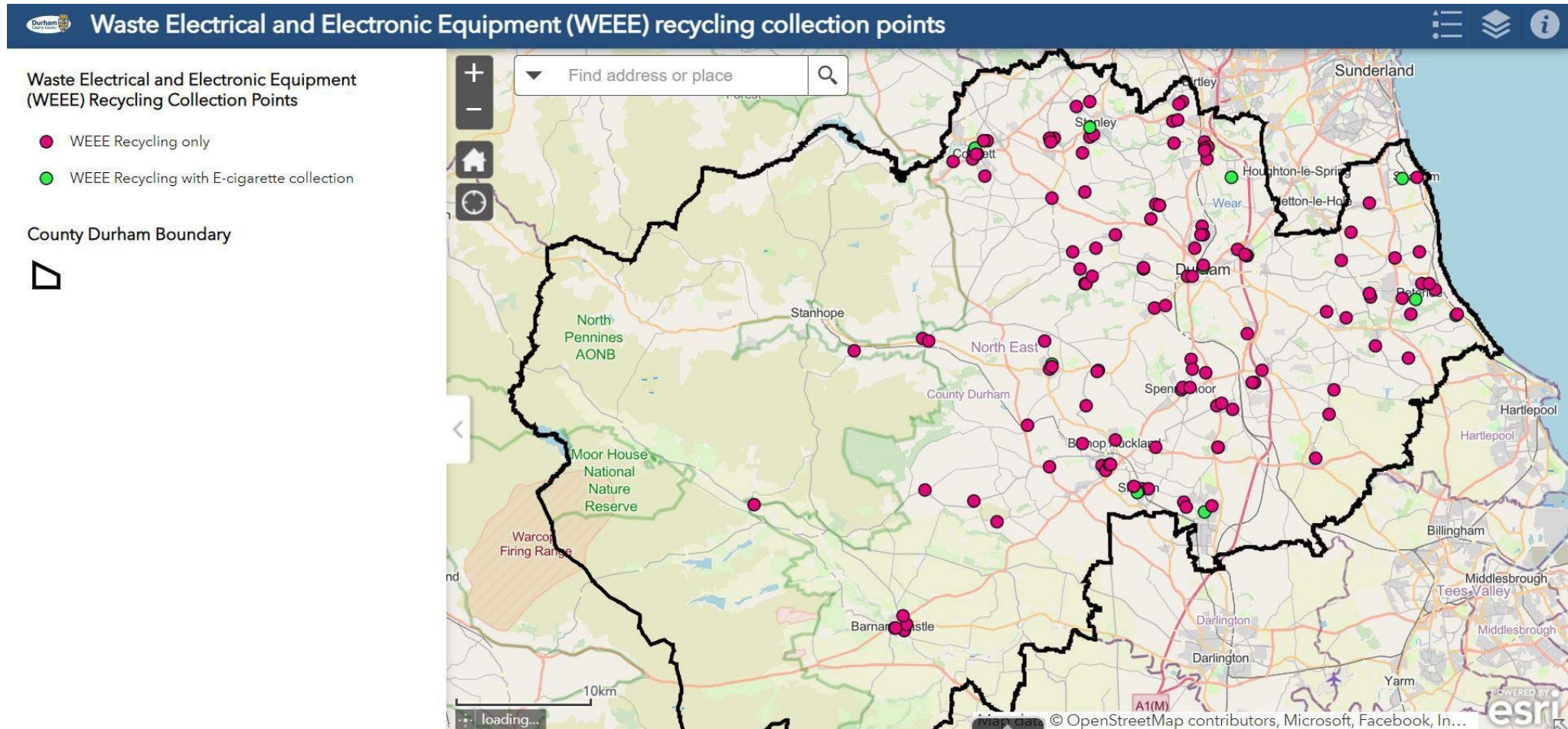
Reuse



Copper Recovery

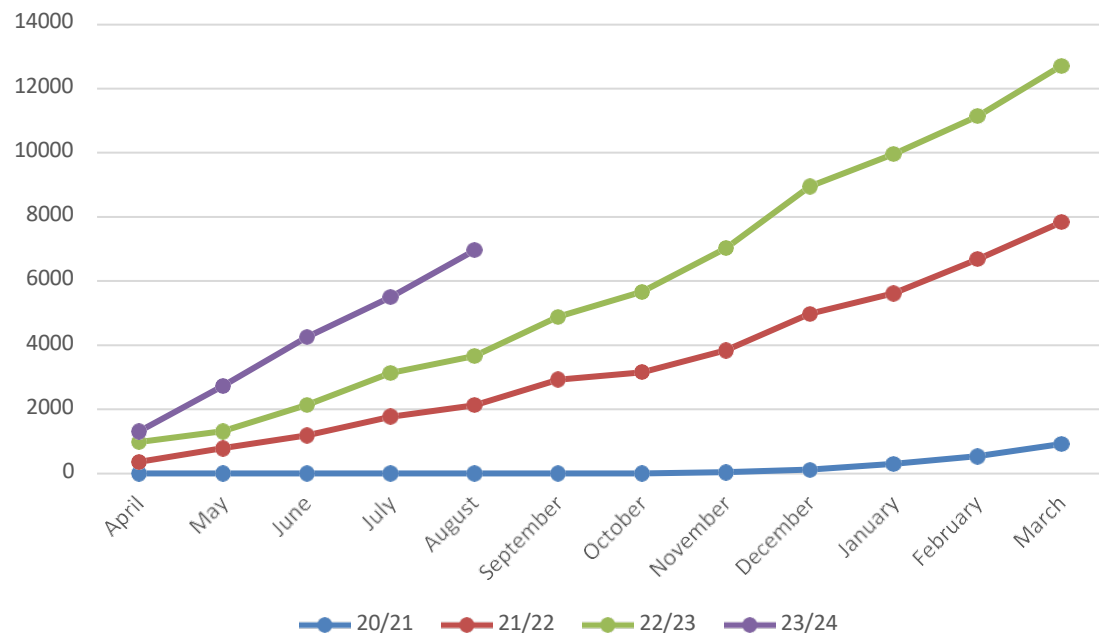


County Durham: Small WEEE Collection Points

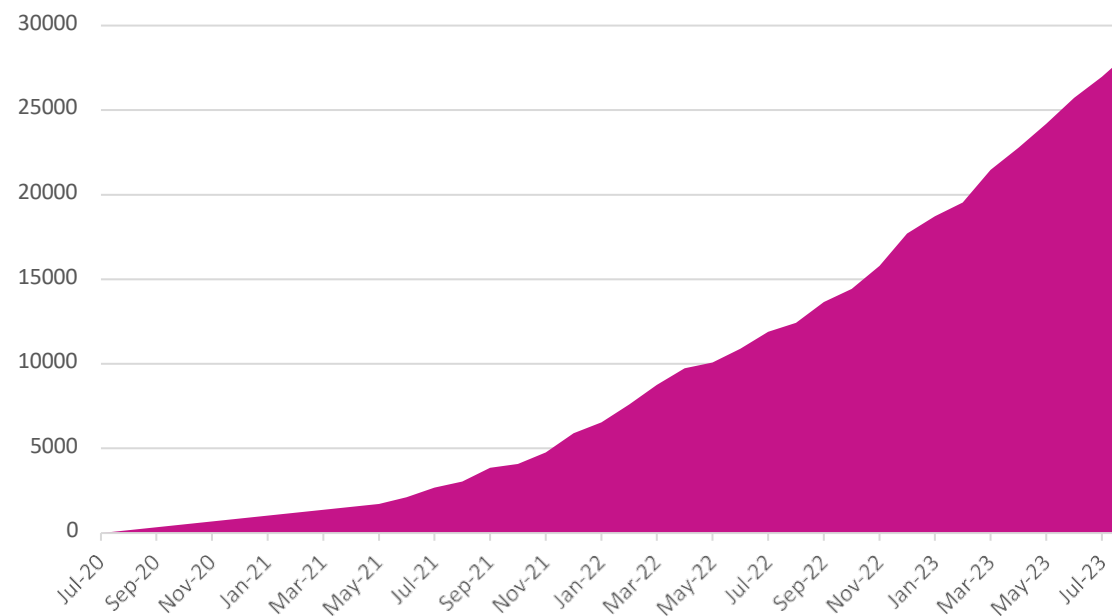


Performance

The cumulative amount of Small WEEE recycled exclusively through the Small WEEE project per financial year (Kg)



Total Small WEEE Recycled exclusively through Small WEEE Project (Kg)



Communications



Webpage: www.durham.gov.uk/WEEE



Monthly Prize Draw. Recycle at your local collection point to be in with a chance to win a prize from AO.com

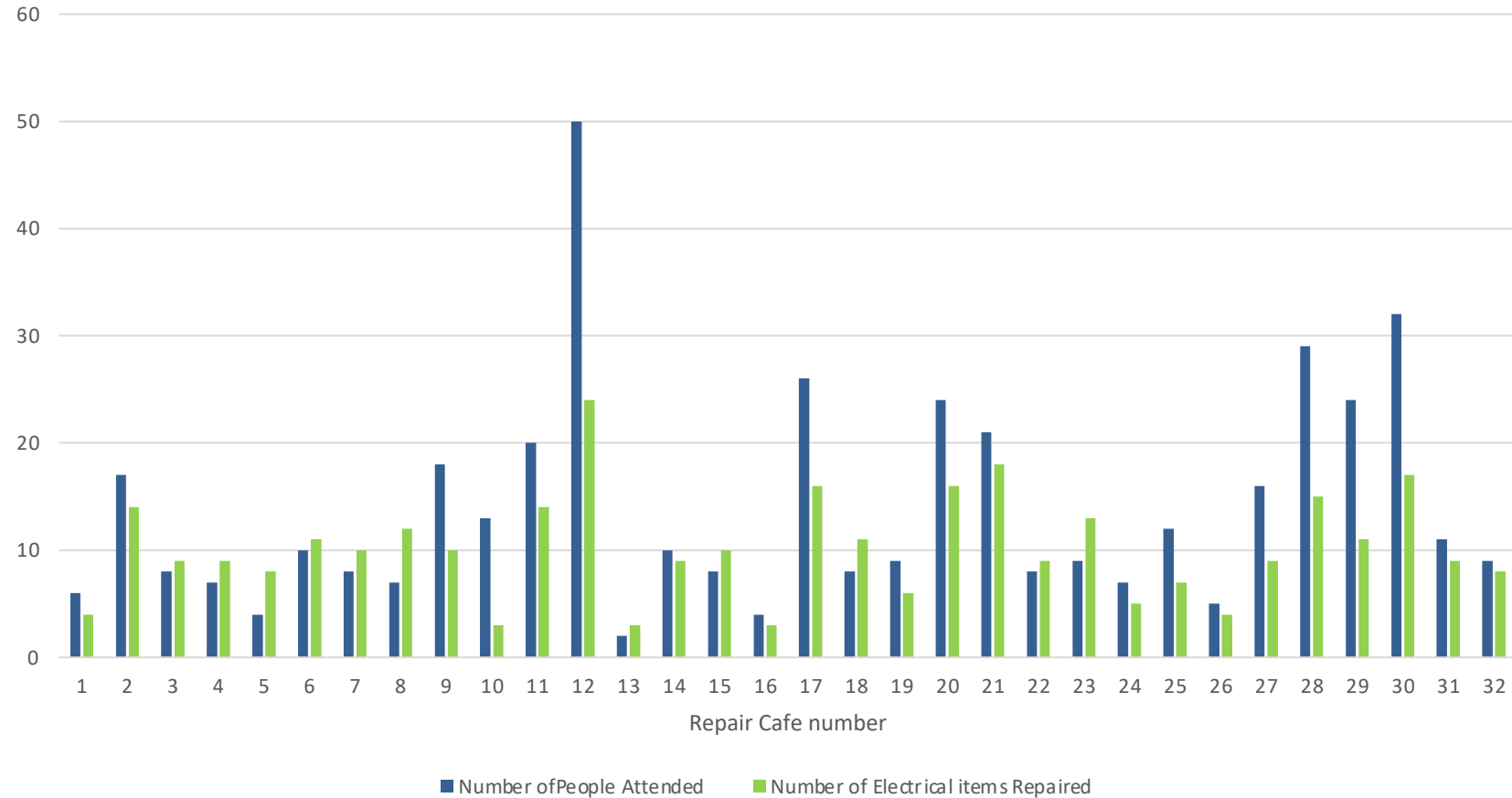


Reuse & Repair



Performance

- 32 Repair Cafés
- 442 people attended
- 327 items repaired
- 1150Kg of EEE repaired or reused
- 7848Kg CO2e saved





Battery Recycling

- In order to combat the rising trend of battery fires and to best enable correct disposal routes for batteries, all 146 small WEEE collection points have a Battery recycling Tube or box.
- The following household batteries are accepted: 6V, D, 9V, C, AA, AAA, Button. We also accept batteries from electrical and electronic equipment including mobile phone, laptop and power tool batteries. Lithium batteries must have both terminals taped over.



E-Cigarette & Vape Recycling

- E-Cigarettes are very difficult to recycle, as they contain a nicotine reservoir & sponge alongside plastic and a lithium battery. Since Small WEEE is usually shredded when recycled, Vapes cannot be disposed of alongside Small WEEE due to the flammable lithium battery. Battery recyclers also do not have the facilities to separate & process the nicotine reservoir, so until recently there was no recycling process for vapes.
- Over 5 million single-use vapes are thrown away every week
- The vapes sold in the UK last year contained enough copper to make 370,000 at-home electric vehicle chargers and enough lithium to produce more than 2,500 EV batteries.



E-Cigarette & Vape Recycling



In Spring 2023, GAP devised a recycling method which uses a press to separate the vape keeping the battery whole. GAP recover all recyclable materials including the battery, and as instructed by the Environment Agency, safely dispose of the nicotine reservoir, sponge and wick through incineration.



E-Cigarette & Vape Recycling

Durham County Council have begun installation of a network of E-cigarette recycling tubes in community buildings across County Durham as well as at our household waste recycling centres. This offers easy access to e-cigarette recycling and goes some way to tackling the environmental problems caused by E-cigarettes & Vapes.

There are currently seventeen community recycling points for vapes, in a mixture of libraries, leisure centres and community centres.





Partners



Conclusion

- Introduced a new service to County Durham residents
- The scheme so far has been extremely popular
- Our partners have been excellent
- 146 Small WEEE & Battery recycling points
- 29 tonnes of Small WEEE recycled
- 32 Repair Cafes
- 1 Tonne of Small EEE repair & reuse
- 17 Vape recycling points
- 40Kg of vapes recycled (Early days!)
- Further promotions and communications to residents will allow for further reuse, repair, recycling and recovery of small electrical goods in line with the waste hierarchy.



Project Contacts

Victoria Burrell (LARAC Vice Chair)

victoria.burrell@durham.gov.uk 03000 266099

Kieran O'Leary

Kieran.OLeary@durham.gov.uk 07342085655

Emily Rutter

Emily.Rutter@durham.gov.uk 07799706145

The Strategic Waste team

wasteaware@durham.gov.uk or through our **Recycle for County Durham** Facebook Page





LARAC

CONFERENCE

CELEBRATION AWARDS

2023



Headline Partner



Brought to you by



QUESTIONS & ANSWERS



LARAC

CONFERENCE

CELEBRATION AWARDS

2023



Headline Partner



Brought to you by



LUNCH & NETWORKING